

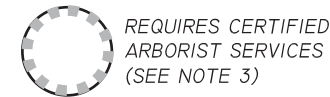
GENERAL NOTES - SEDIMENT AND EROSION CONTROL:

1. THE CONTRACTOR SHALL BE SOLELY RESPONSIBLE FOR THE PREVENTION, CONTROL, AND ABATEMENT OF EROSION, WATER POLLUTION, AND THE TRANSPORTATION OF ERODED MATERIALS OFF SITE.
2. THE CONTRACTOR SHALL PREPARE AND SUBMIT TO THE ENGINEER A SEDIMENT AND EROSION CONTROL PLAN TO ACCOMPANY THE STORMWATER POLLUTION PREVENTION PLAN AND THE SEDIMENT AND EROSION CONTROL PLAN INCLUDED IN THESE PLANS. THE SEDIMENT AND EROSION CONTROL PLAN SHALL BE PREPARED IN ACCORDANCE WITH THE "FLORIDA EROSION AND SEDIMENT CONTROL MANUAL" AND SHALL BE SPECIFIC TO THE MEANS, METHODS, AND SEQUENCE OF CONSTRUCTION TO BE EMPLOYED BY THE CONTRACTOR AND SHALL IDENTIFY THE TYPES AND LOCATIONS OF CONTROLS THAT ARE TO BE IMPLEMENTED DURING EACH PHASE OF CONSTRUCTION AS SHOWN ON THE APPROVED CONSTRUCTION SCHEDULE TO MINIMIZE EROSION, PREVENT THE TRANSFER OF ERODED MATERIALS ONTO ANY OFF SITE PARCEL OR INTO ANY RECEIVING WATER, AND PREVENT VIOLATING STATE AND/OR FEDERAL PERMIT REQUIREMENTS. PAYMENT FOR PREPARING AND SUBMITTING THE SEDIMENT AND EROSION CONTROL PLAN AND FOR ANY MODIFICATIONS TO THE SEDIMENT AND EROSION CONTROL PLAN DURING CONSTRUCTION WILL BE INCLUDED IN THE PAY ITEM FOR MOBILIZATION. THE SEDIMENT AND EROSION CONTROL PLAN SHALL DESCRIBE BUT NOT BE LIMITED TO THE FOLLOWING ITEMS FOR EACH PHASE OF CONSTRUCTION OPERATIONS OR ACTIVITIES:
 - A. TYPES AND LOCATIONS OF ALL EROSION CONTROL DEVICES
 - B. ESTIMATED TIME EROSION CONTROL DEVICES WILL BE IN OPERATION
 - C. METHODS FOR CONTAINMENT OR REMOVAL OF ERODED MATERIALS FROM DISCHARGES RELATED TO DEWATERING OPERATIONS
 - D. METHODS FOR CONTAINMENT OR REMOVAL OF POLLUTANTS OR HAZARDOUS WASTES
 - E. METHODS FOR MAINTENANCE OF EROSION CONTROL DEVICES
 - F. SCHEDULES FOR MONITORING AND MAINTAINING EROSION CONTROL DEVICES
 - G. NAME AND PHONE NUMBERS OF PERSON RESPONSIBLE FOR MONITORING AND MAINTAINING EROSION CONTROL DEVICES
3. NO CONSTRUCTION ACTIVITIES SHALL BEGIN UNTIL THE SEDIMENT AND EROSION CONTROL PLAN HAS RECEIVED WRITTEN APPROVAL FROM THE ENGINEER.
4. THE CONTRACTOR SHALL UPDATE THE SEDIMENT AND EROSION CONTROL PLAN WHENEVER THERE IS A CHANGE IN CONSTRUCTION SEQUENCE OR ACTIVITIES THAT HAS A SIGNIFICANT EFFECT ON THE POTENTIAL FOR THE DISCHARGE OF POLLUTANTS OFF SITE OR INTO ANY RECEIVING WATER AND SHALL SUBMIT THE UPDATED PLAN FOR REVIEW AND APPROVAL BY THE ENGINEER.
5. EROSION AND SEDIMENT CONTROLS SHALL BE PLACED PRIOR TO OR AS THE FIRST STEP IN CONSTRUCTION AND SHALL BE IN PLACE BEFORE DISTURBING SOIL UPSTREAM OF THE CONTROL.
6. FIELD CONDITIONS MAY REQUIRE THE USE OF ADDITIONAL TYPES AND QUANTITIES OF SEDIMENT AND EROSION CONTROL DEVICES DURING CONSTRUCTION AS DETERMINED BY THE CONTRACTOR, THE ENVIRONMENTAL INSPECTOR, OR THE ENGINEER.
7. THE CONTRACTOR SHALL INSPECT ALL SEDIMENT AND EROSION CONTROL DEVICES PRIOR TO SUSPENSION OF WORK ACTIVITIES EACH DAY, IMMEDIATELY AFTER EACH RAINFALL, AND AT LEAST DAILY DURING PROLONGED RAINFALL TO ENSURE THAT THE DEVICES ARE PROPERLY LOCATED AND MAINTAINED FOR EFFECTIVENESS. ANY REQUIRED REMEDIAL ACTION SHALL BE PERFORMED IMMEDIATELY.
8. SEDIMENT TRAPPED BY THE EROSION CONTROL DEVICES IS TO BE REMOVED BY THE CONTRACTOR AFTER EACH RAIN STORM.
9. THE AMOUNT OF AREA DISTURBED AT ONE TIME SHALL BE LIMITED TO THE MINIMUM NECESSARY TO ADEQUATELY IMPLEMENT THE WORK. CONSTRUCTION OPERATIONS SHALL BE CONTROLLED TO MINIMIZE UNPROTECTED AREAS EXPOSED TO WEATHER, AND AREAS OUTSIDE THE LIMITS OF CONSTRUCTION SHALL NOT BE DISTURBED.
10. EXCAVATED MATERIAL SHALL NOT BE DEPOSITED IN LOCATIONS WHERE IT COULD BE WASHED AWAY BY HIGH WATER OR BY STORMWATER RUNOFF, AND STOCKPILES SHALL BE COVERED OR ENCIrcLED WITH SEDIMENT CONTAINMENT DEVICES.
11. DURING THE INSTALLATION OF STORM DRAIN OR UTILITY PIPING, SYNTHETIC BALE BARRIERS SHALL BE PLACED BELOW THE WORK ZONES TO AID IN CONTROLLING THE TRANSFER OF ERODED MATERIAL OFF SITE.
12. NEW AND EXISTING DRAINAGE STRUCTURES SHALL BE PROTECTED FROM SILTATION DURING CONSTRUCTION. BARRIERS SHALL BE PLACED AROUND ALL INCOMPLETE STORMWATER INLETS AND MANHOLES DURING CONSTRUCTION. CURB INLET FILTERS SHALL BE PLACED ACROSS THE THROATS OF ALL EXISTING AND COMPLETED CURB INLETS.
13. EXISTING FLOW CAPACITY SHALL BE MAINTAINED IN THE DRAINAGE SYSTEMS TO CONVEY RUNOFF FROM RAIN STORMS THAT OCCUR DURING CONSTRUCTION. EXISTING DRAINAGE PIPES THAT ARE NOTED TO BE PLUGGED OR REMOVED SHALL REMAIN IN SERVICE UNTIL FLOWS CAN BE DIVERTED TO THE NEW DRAINAGE SYSTEM. WHERE NEW PIPES ARE TO BE INSTALLED IN CLOSE PROXIMITY TO EXISTING PIPES THAT ARE TO BE REMOVED, PROVISIONS SHALL BE MADE TO DIVERT FLOWS FROM THE EXISTING PIPES TO THE NEW PIPES PRIOR TO RAIN STORMS. TEMPORARY PIPES SHALL BE PLACED FOR THIS PURPOSE PRIOR TO SUSPENSION OF WORK ACTIVITIES EACH DAY.
14. STABILIZATION MEASURES SHALL BE INITIATED FOR EROSION AND SEDIMENT CONTROL ON DISTURBED AREAS AS SOON AS PRACTICABLE, BUT IN NO CASE MORE THAN 14 DAYS AFTER CONSTRUCTION ACTIVITY IN THOSE PORTIONS OF THE SITE HAS TEMPORARILY OR PERMANENTLY CEASED.
15. PERMANENT SOIL EROSION CONTROL MEASURES FOR ALL DISTURBED LAND AREAS SHALL BE COMPLETED IMMEDIATELY AFTER FINAL GRADING. WHEN IT IS NOT POSSIBLE TO PERMANENTLY PROTECT A DISTURBED AREA IMMEDIATELY AFTER GRADING OPERATIONS, TEMPORARY EROSION CONTROL MEASURES SHALL BE INSTALLED. ALL TEMPORARY EROSION CONTROL DEVICES SHALL BE MAINTAINED UNTIL PERMANENT MEASURES ARE IN PLACE AND ESTABLISHED.
16. THE CONTRACTOR SHALL OBTAIN AN ENVIRONMENTAL MANAGEMENT PERMIT FROM THE CITY OF TALLAHASSEE GROWTH MANAGEMENT DEPARTMENT FOR ALL STOCKPILE AND CONSTRUCTION STAGING AREAS LOCATED OUTSIDE THE LIMITS OF CONSTRUCTION.

GENERAL NOTES - TREE PROTECTION:

1. BARRICADE FENCING SHALL BE INSTALLED AT OR NEAR THE CRITICAL PROTECTION ZONE OF EACH TREE TO BE PROTECTED PRIOR TO INITIATION OF ANY CONSTRUCTION ACTIVITY, AND THE FENCING SHALL REMAIN IN PLACE UNTIL ALL CONSTRUCTION ACTIVITY HAS BEEN COMPLETED.
2. ALL ROOTS 3/4" IN DIAMETER AND LARGER OF TREES TO BE PROTECTED OR PRESERVED THAT ARE EXPOSED DURING TRENCHING AND EXCAVATION SHALL BE CLEANLY CUT WITH A HANDSAW AND COVERED IMMEDIATELY WITH SOIL OR KEPT MOISTENED WITH WET BURLAP OR PEAT MOSS UNTIL THE TRENCH CAN BE FILLED. WHEN IT IS NOT POSSIBLE TO BACKFILL IN THE SAME DAY, THE ROOTS SHALL BE FRESHLY CUT WITH A HANDSAW A REASONABLE DISTANCE FROM THE ORIGINAL CUT AND BACKFILLED IMMEDIATELY TO AVOID SOIL OR ROOT DEHYDRATION.
3. THE CONTRACTOR SHALL PROVIDE THE SERVICES OF A CERTIFIED ARBORIST TO BE ON SITE TO DIRECT TREE PROTECTION AND MITIGATION ACTIVITIES DURING ALL CONSTRUCTION OPERATIONS WITHIN THE CPZ OF TREES IDENTIFIED AS THOSE REQUIRING CERTIFIED ARBORIST SERVICES. MITIGATION ACTIVITIES INCLUDE LIMB PRUNING, ROOT CUTTING, WATERING, AND OTHER OPERATIONS NEEDED TO PRESERVE THE HEALTH OF THE TREE. SHOULD THE ARBORIST DETERMINE THAT MITIGATION EFFORTS WILL NOT BE SUFFICIENT TO OFFSET CONSTRUCTION IMPACTS AND TREE REMOVAL IS WARRANTED, THE ARBORIST WILL IMMEDIATELY NOTIFY THE CITY. SHOULD THE CITY DETERMINE THAT TREE REMOVAL IS WARRANTED, THE CITY WILL DIRECT THE CONTRACTOR TO REMOVE THE TREE. THE COST TO REMOVE ANY TREE DAMAGED BY CONSTRUCTION IMPACTS SHALL BE INCLUDED IN THE BID ITEM FOR CLEARING AND GRUBBING. THE COST OF ALL ARBORIST SERVICES AND ALL TREE MITIGATION ACTIVITIES AND OPERATIONS SHALL BE INCLUDED IN THE BID ITEM FOR MOBILIZATION.

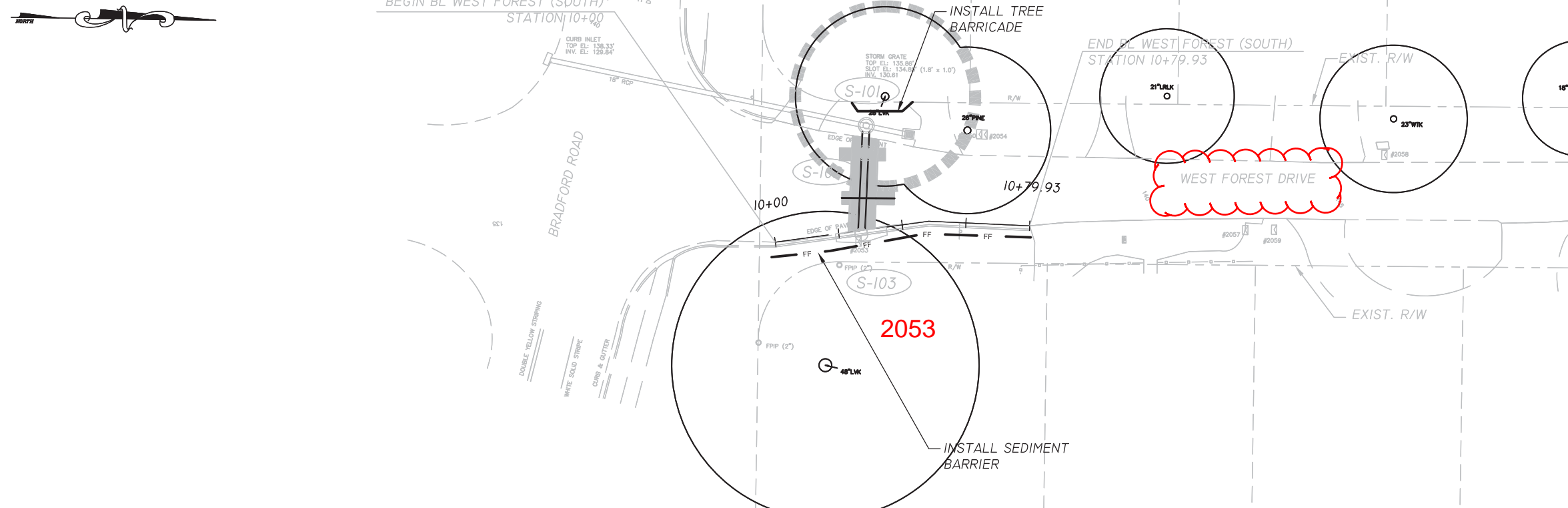
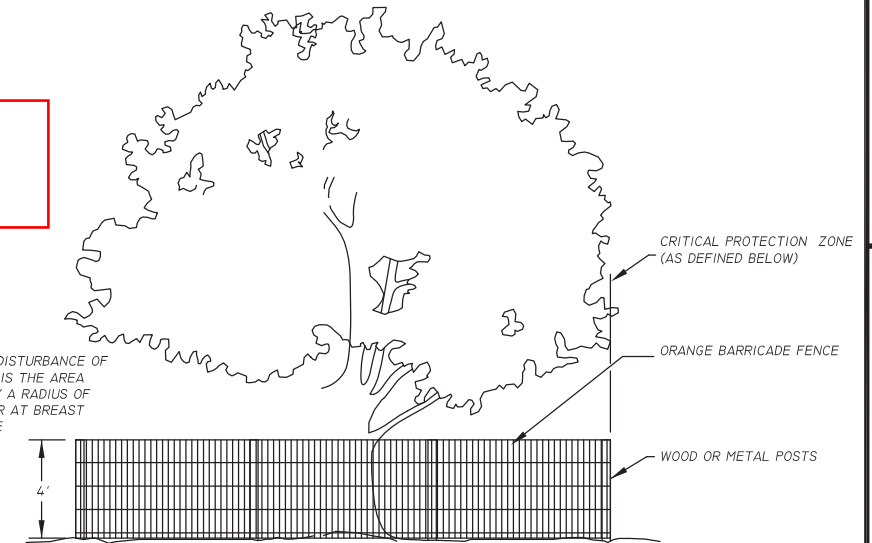
LEGEND



NOTES:

THE TREE PROTECTION BARRICADE IS TO PREVENT DISTURBANCE OF THE CRITICAL PROTECTION ZONE (CPZ). THE C.P.Z. IS THE AREA SURROUNDING A TREE WITH A CIRCLE DESCRIBED BY A RADIUS OF ONE FOOT FOR EACH INCH OF THE TREE'S DIAMETER AT BREST HEIGHT. THE AREA WITHIN BARRICADE IS NOT TO BE USED FOR STORAGE OF MATERIAL OR EQUIPMENT.

TREE PROTECTION BARRICADE
NTS



ENGINEER OF RECORD
LANE P. LUCAS, P.E.
Eutaw, Inc.
2822 Remington Green Circle
Tallahassee, FL 32308
P.E. NO. 53596

ORIGINAL _____

REVISIONS: Revised symbol for requiring arborist services

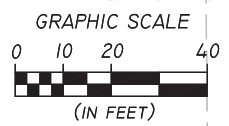
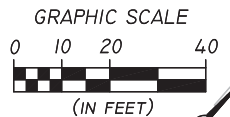
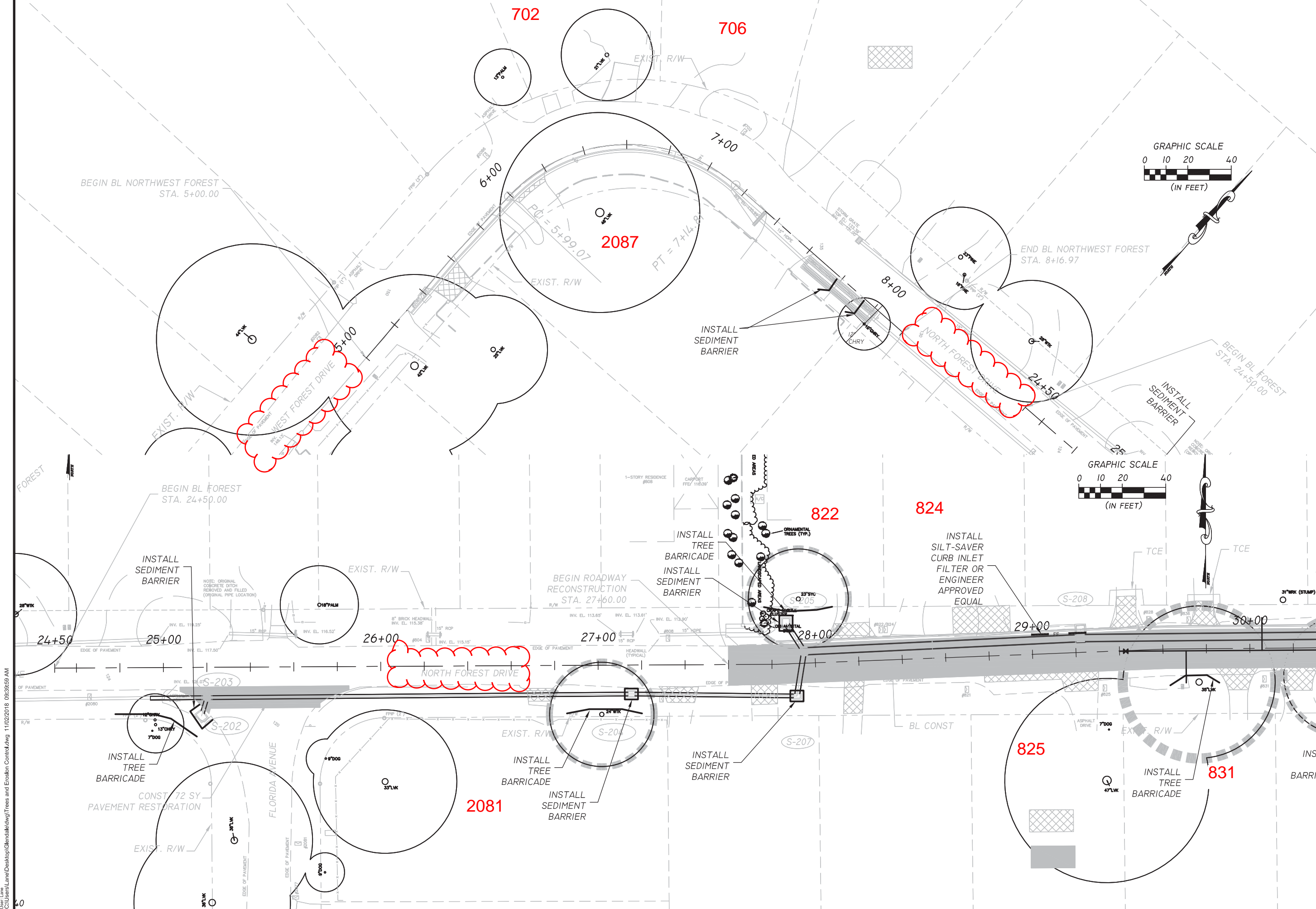
1	
2	
3	
4	
5	

SHEET
TREE PROTECTION AND EROSION CONTROL

PROJECT
GLENDALE NEIGHBORHOOD DRAINAGE IMPROVEMENTS

EUTAW, INC.
Engineering Utilities, Transportation, and Water
2822 Remington Green Cir., Suite 202
Tallahassee, FL 32308
PHONE: (850) 383-0400
www.eutawinc.com
Certificate of Authorization #9961

JOB NO. _____
DRAWN _____
DESIGNED _____
CHECKED _____
QC _____



ENGINEER OF RECORD
LANE P. LUCAS, P.E.
Eduw, Inc.
2822 Remington Green Circle
Tallahassee, FL 32308
P.E. NO. 53536

ORIGINAL _____

REVISIONS:

1	_____
2	_____
3	_____
4	_____
5	_____

SHEET
TREE PROTECTION
AND
EROSION CONTROL

PROJECT
GLENDALE NEIGHBORHOOD
DRAINAGE IMPROVEMENTS

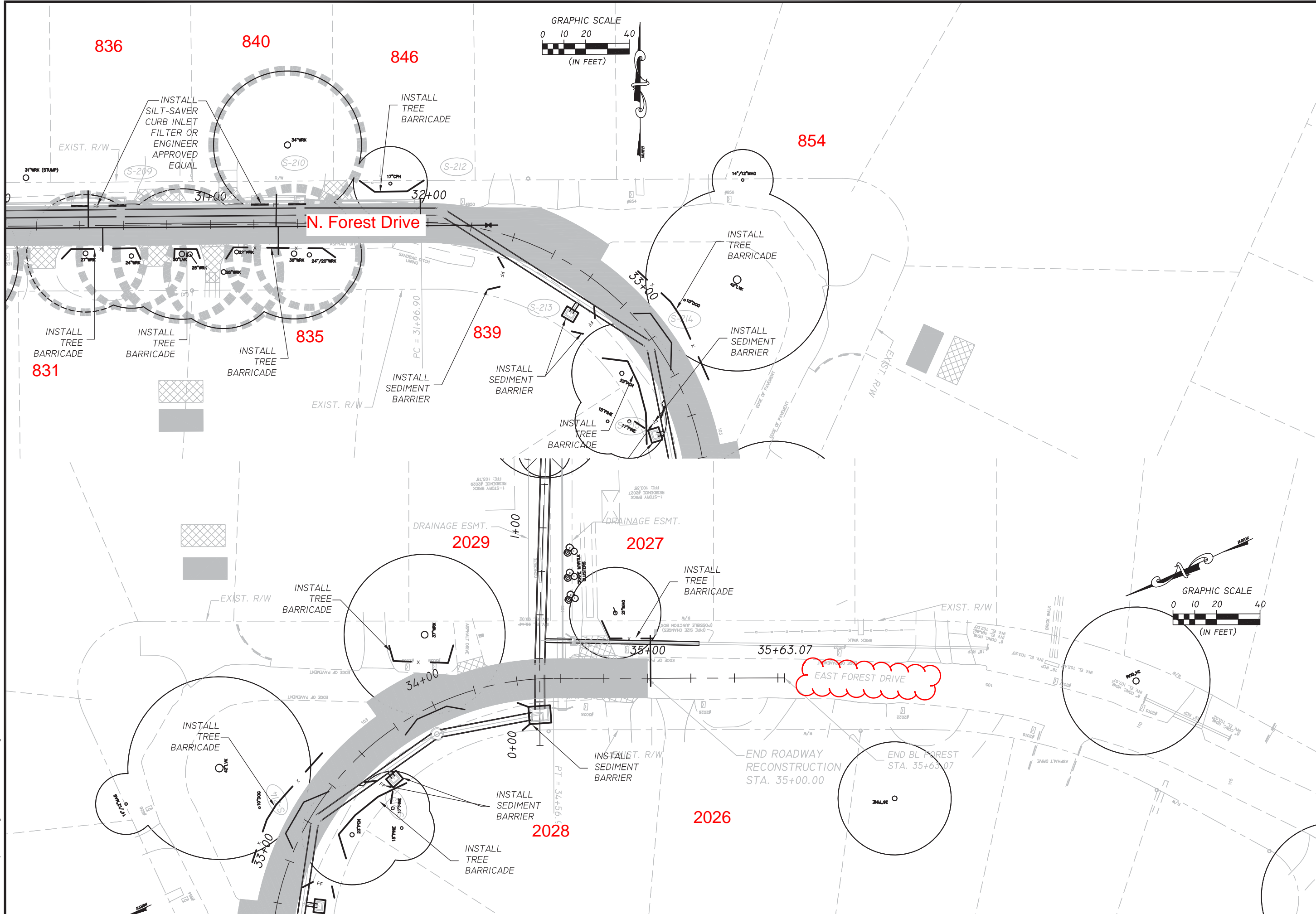
Eduw, Inc.
Engineering Utilities, Transportation, and Water
2822 Remington Green Cir., Suite 202
Tallahassee, FL 32308
PHONE: (850) 383-0400
www.eduwinc.com
Certificate of Authorization #9961

JOB NO. _____
DRAWN _____
DESIGNED _____
CHECKED _____
QC _____

47

C:\Users\lane\Desktop\Glendale\dwg\Trees and Erosion Control.dwg 11/02/2018 09:38:59 AM

C:\Users\lane\Desktop\Glendale\dwg\Trees and Erosion Control.dwg 11/02/2018 08:40:31 AM



ENGINEER OF RECORD
 LANE P. LUCAS, P.E.
 EITW, Inc.
 2822 Remington Green Circle
 Tallahassee, FL 32308
 P.E. NO. 53936

ORIGINAL _____
 REVISIONS:

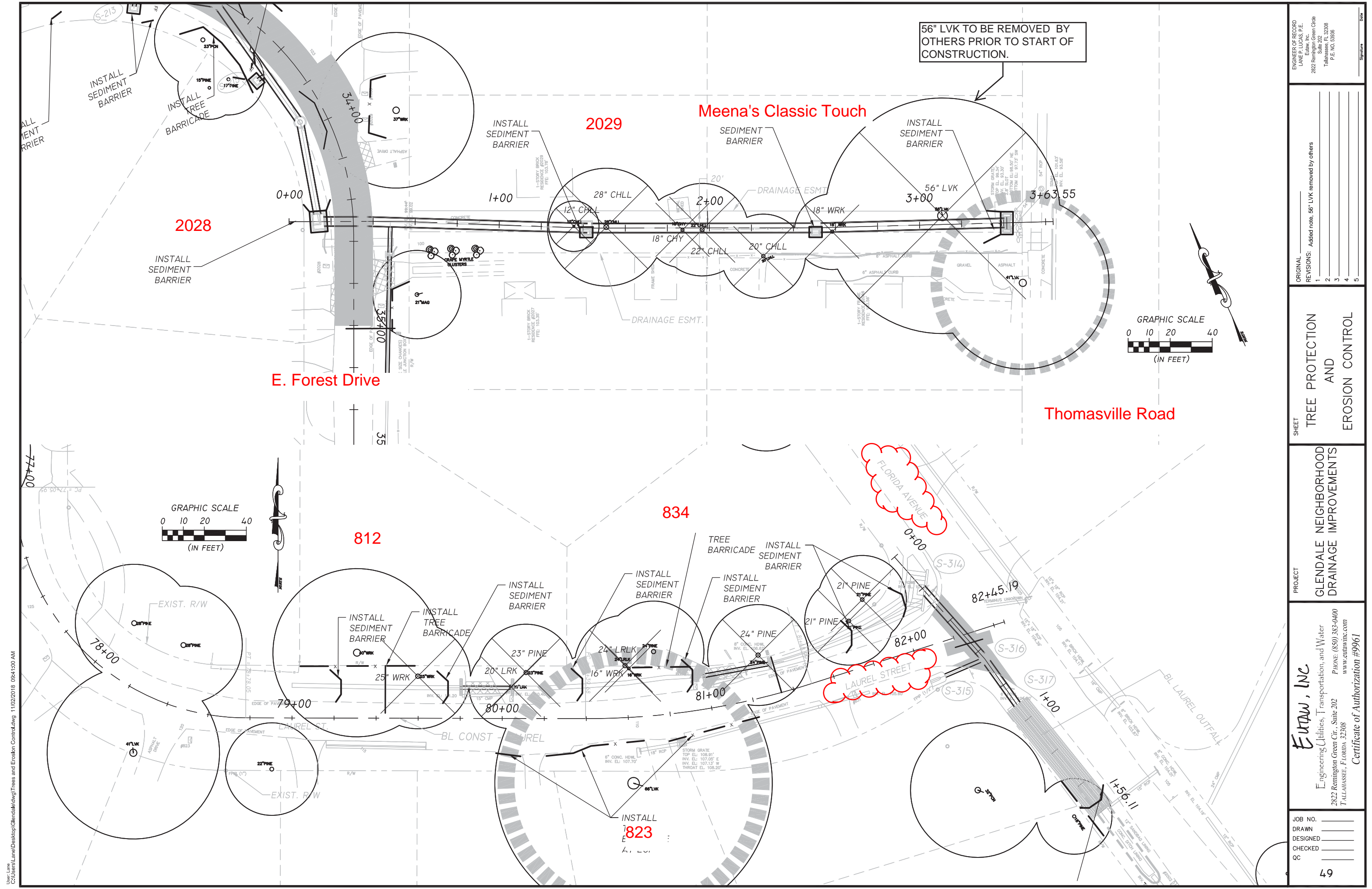
1	_____
2	_____
3	_____
4	_____
5	_____

SHEET
TREE PROTECTION AND EROSION CONTROL

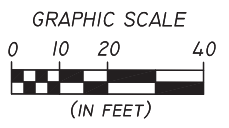
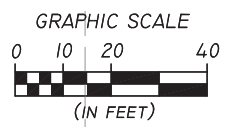
PROJECT
GLENDALE NEIGHBORHOOD DRAINAGE IMPROVEMENTS

EITW, INC.
 Engineering Utilities, Transportation, and Water
 2822 Remington Green Cir., Suite 202
 TALLAHASSEE, FLORIDA 32308
 PHONE: (850) 383-0400
 WWW.EITWINC.COM
 Certificate of Authorization #9961

JOB NO. _____
 DRAWN _____
 DESIGNED _____
 CHECKED _____
 QC _____
 48



56" LVK TO BE REMOVED BY OTHERS PRIOR TO START OF CONSTRUCTION.



ENGINEER OF RECORD
LANE P. LUCAS, P.E.
Eutaw, Inc.
2822 Remington Green Circle
Tallahassee, FL 32308
P.E. NO. 53936

ORIGINAL _____
REVISIONS: Added note, 56" LVK removed by others

1	
2	
3	
4	
5	

SHEET
TREE PROTECTION
AND
EROSION CONTROL

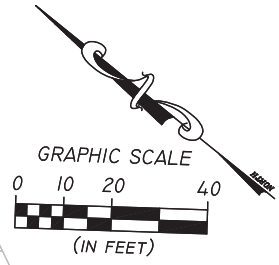
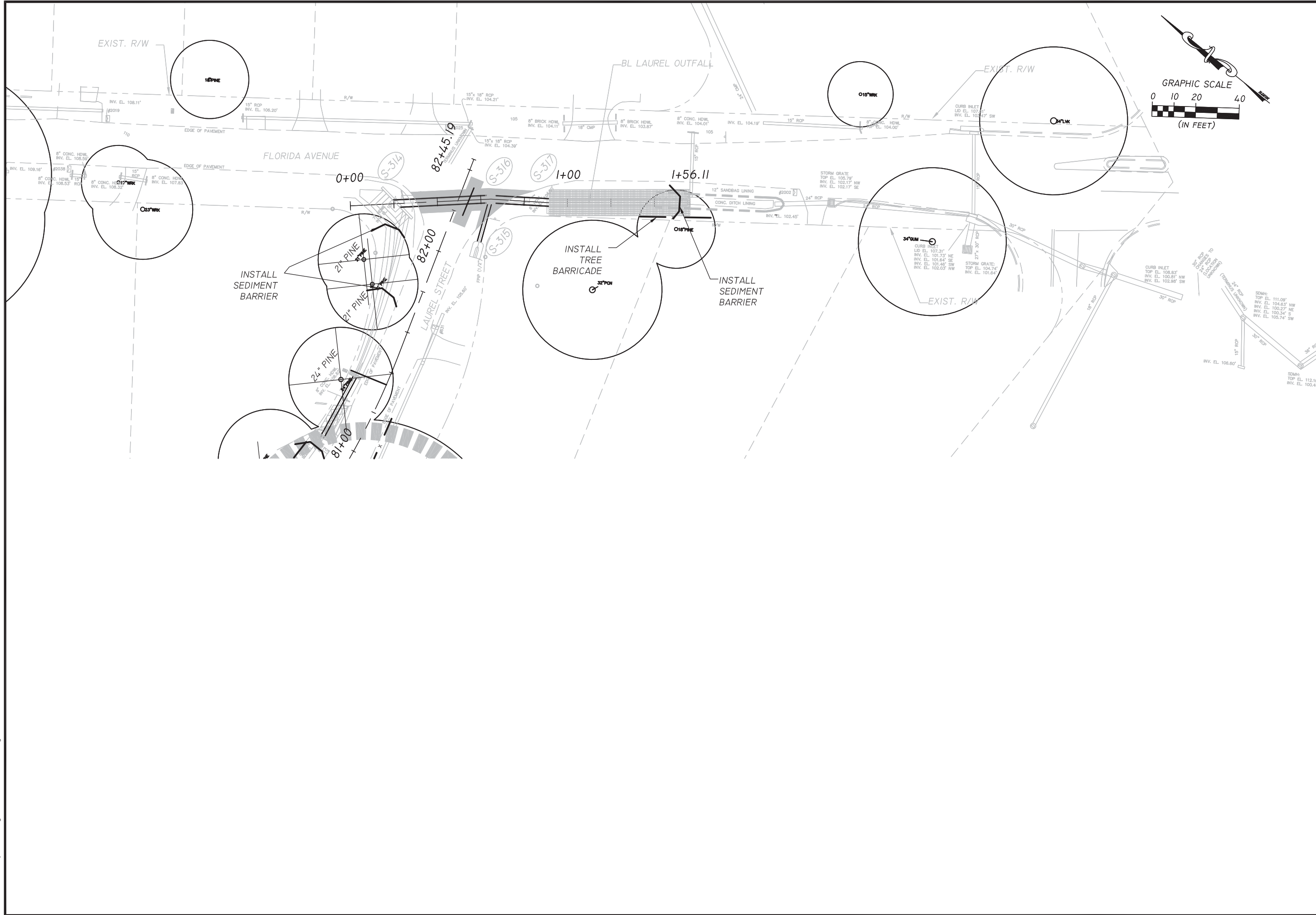
PROJECT
GLENDALE NEIGHBORHOOD
DRAINAGE IMPROVEMENTS

EUTAW, INC.
Engineering Utilities, Transportation, and Water
2822 Remington Green Cir., Suite 202
Tallahassee, FL 32308
PHONE: (850) 383-0400
WWW.EUTAWINC.COM
Certificate of Authorization #9961

JOB NO. _____
DRAWN _____
DESIGNED _____
CHECKED _____
QC _____

49

User: Lane C:\Users\Lane\Desktop\Glendale\dwg\Trees and Erosion Control.dwg 11/02/2018 08:41:00 AM



ENGINEER OF RECORD
 LANE P. LUCAS, P.E.
 Eutaw, Inc.
 2822 Remington Green Circle
 Tallahassee, FL 32308
 P.E. NO. 53936

ORIGINAL	REVISIONS:
1	1
2	2
3	3
4	4
5	5

SHEET
TREE PROTECTION AND EROSION CONTROL

PROJECT
GLENDALE NEIGHBORHOOD DRAINAGE IMPROVEMENTS

Eutaw, Inc.
 Engineering Utilities, Transportation, and Water
 2822 Remington Green Cir., Suite 202 Tallahassee, FL 32308
 PHONE: (850) 383-0400
 www.eutawinc.com
 Certificate of Authorization #9961

JOB NO. _____
 DRAWN _____
 DESIGNED _____
 CHECKED _____
 QC _____